



Pork Supply Chain in China

Zhiyang Yin

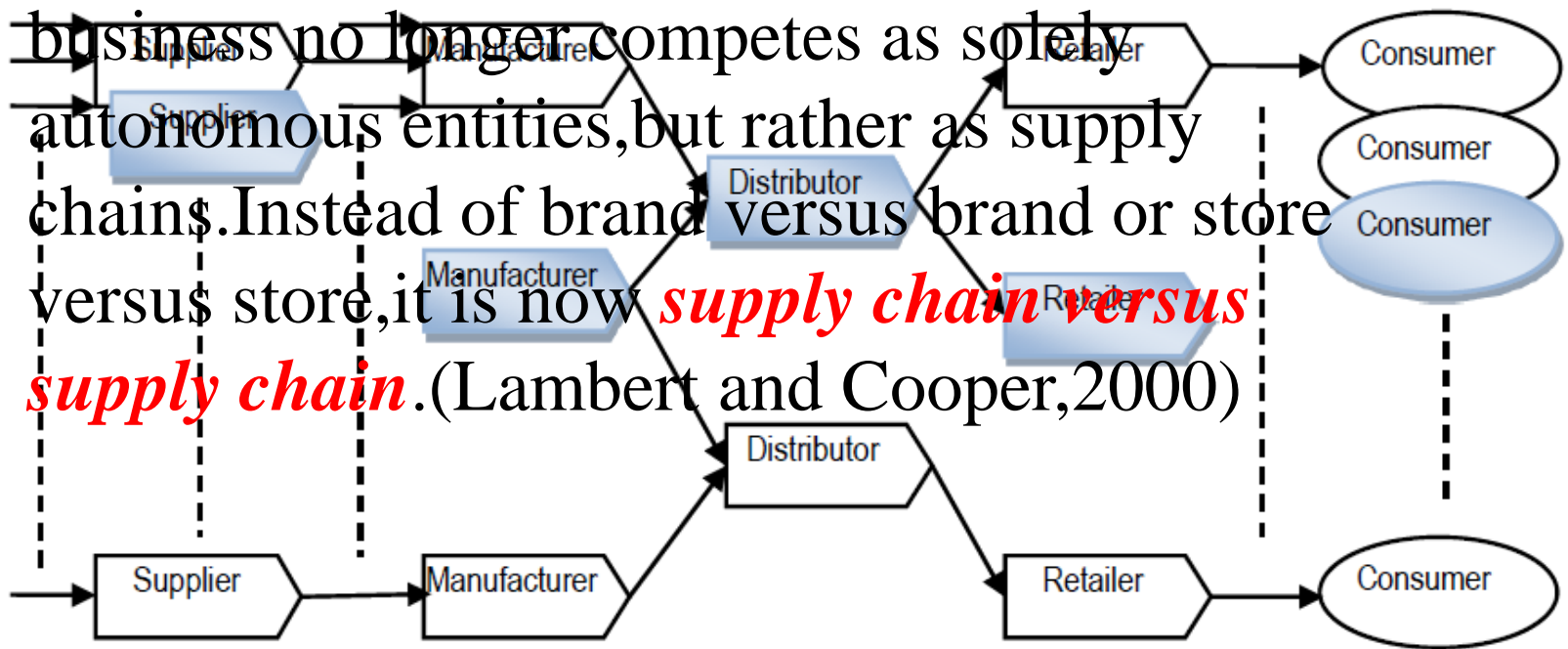
Nanjing Agriculture University, China

Outline

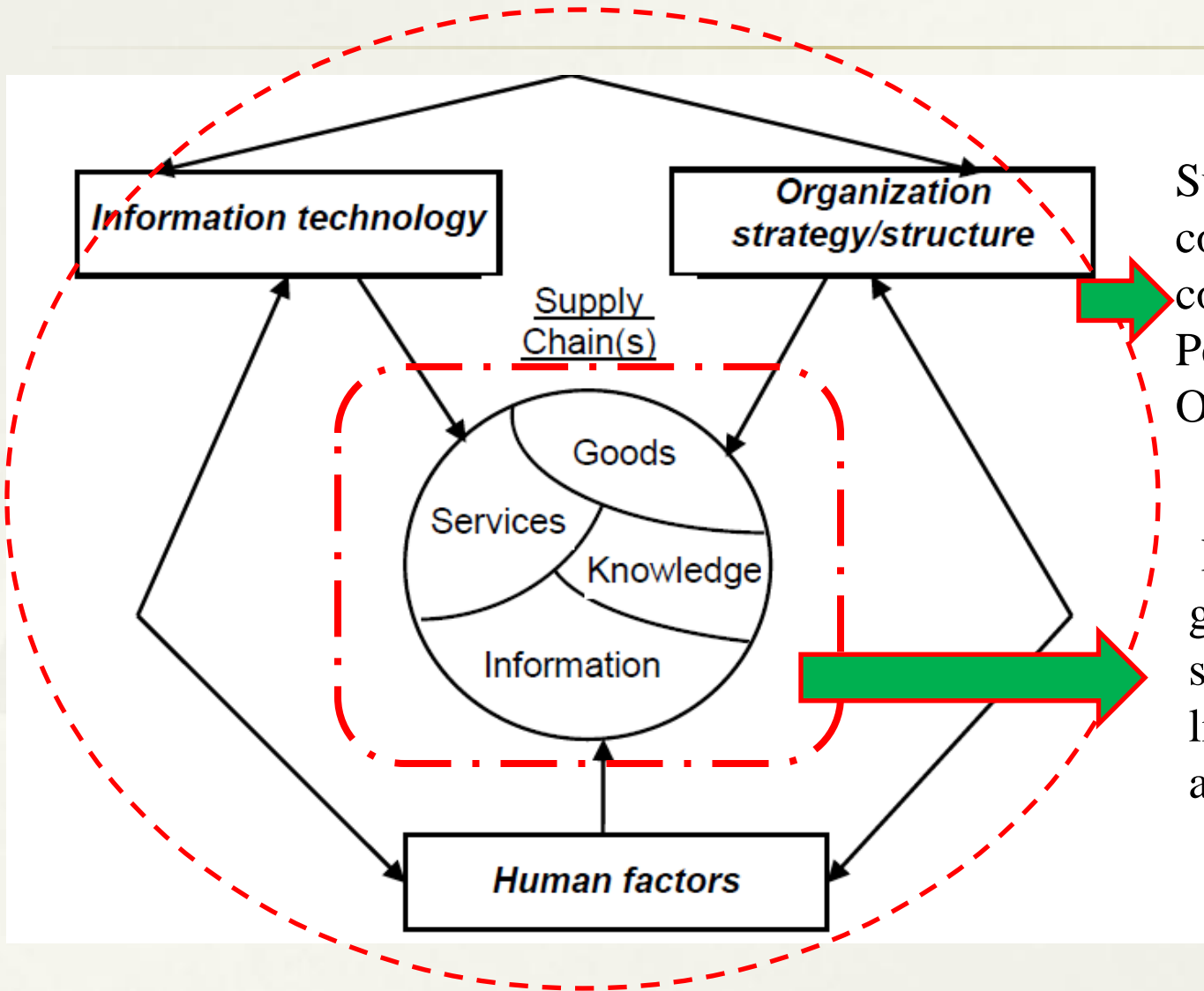
- 1.Introduction
- 2.Chinese pork Chain
- 3.Pig production of China
- 4.The distribution of pig slaughter and processing companies of China
- 5.The pork consumption characters of China

Schematic diagram of a supply chain (shaded) within the total supply chain network

This is a generic supply chain within the context of ~~One of the most significant paradigm shifts of the total supply chain network; each firm belongs to at least one supply chain~~ modern business management is that individual



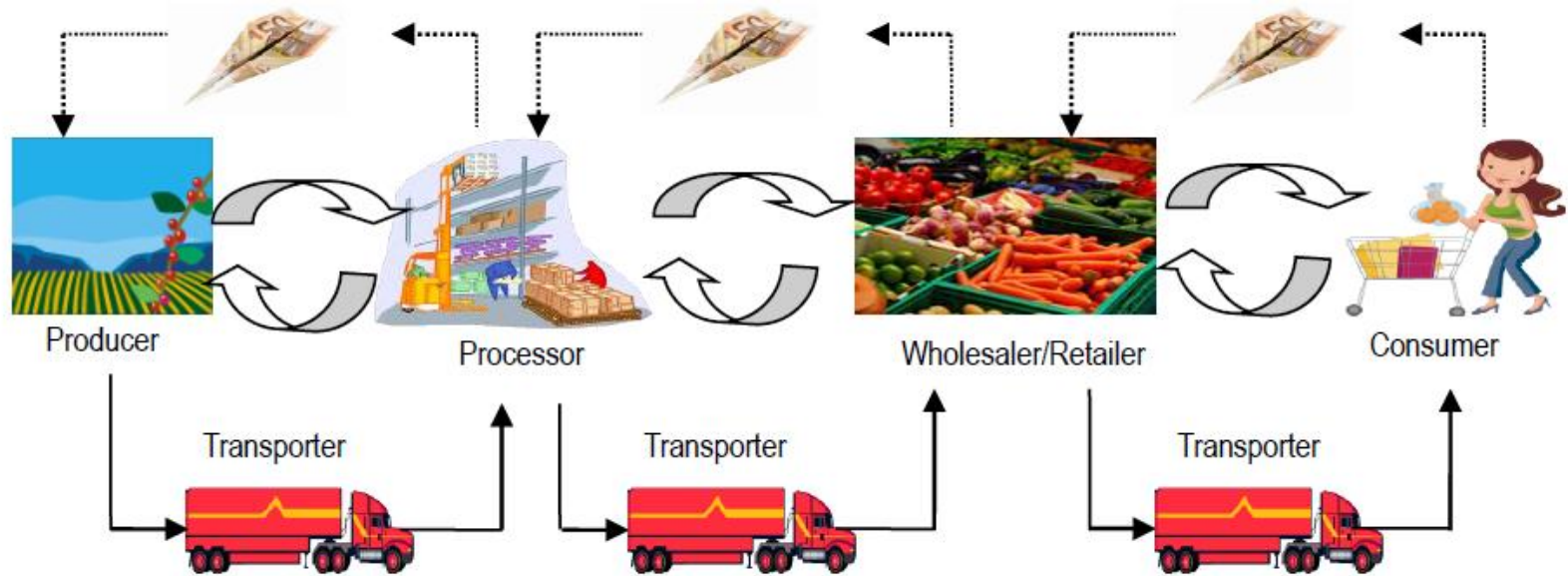
Generic Supply Chain Model



Supply chain systems is composed of components as People, Infrastructure , Organization, and Flows

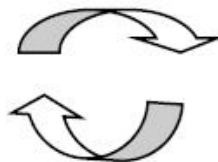
Flows of physical goods and intangible services. like: knowledge, information, and services.

Agri-food chain management



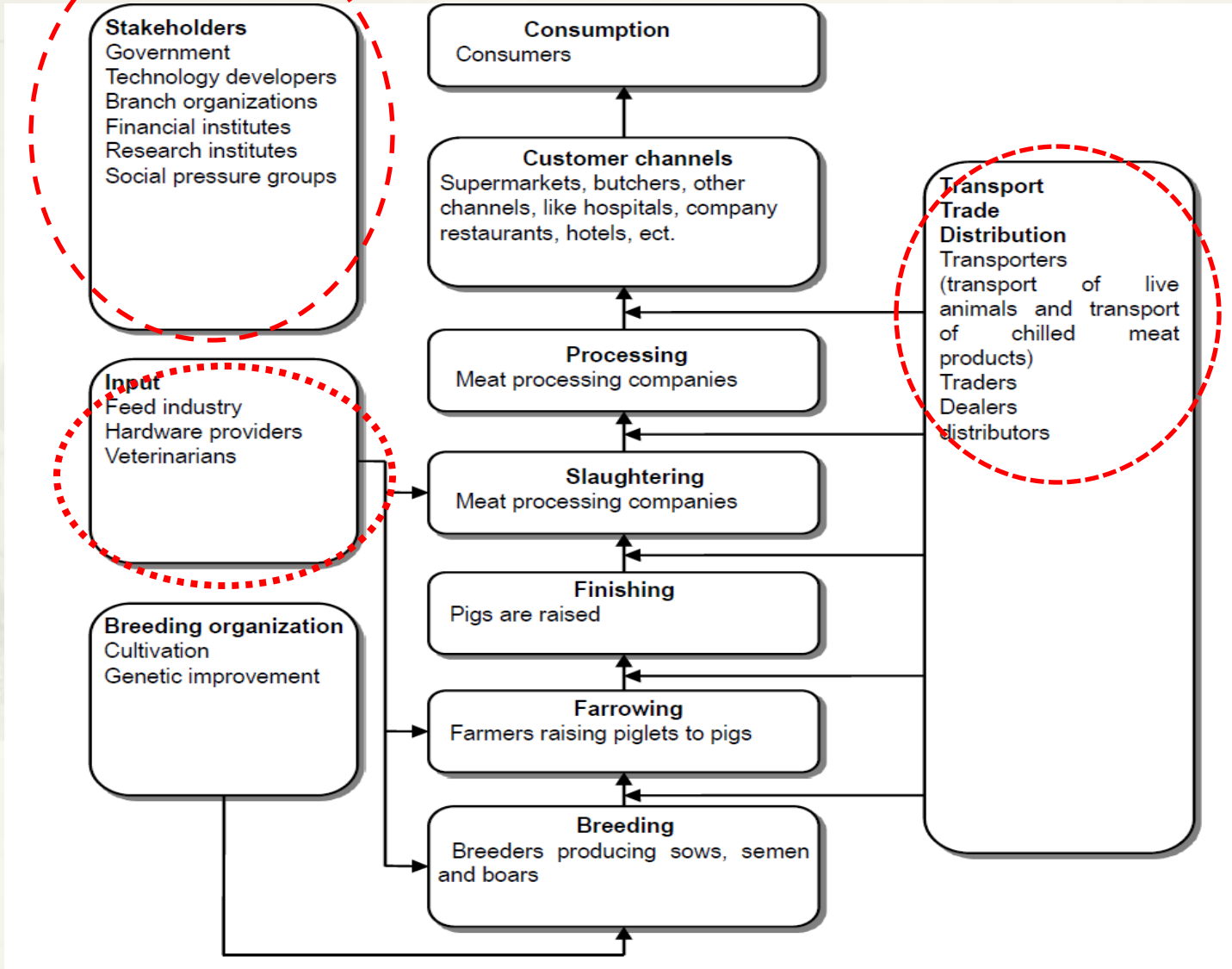
Notes: → Represents material flow (products and service)

←..... Represents value flow



Information flow

A Pork Chain



Distributions channels of pig/pork in Chinese pork chain



Arrows indicate product flows.
 The size of the arrows indicates the relative importance of the channel

Top 10 pork production countries in the world (Unit tonnes)

| year | 2008 | | 2010 | | 2012 | |
|--------------------------|-------------------|--------------|-------------------|--------------|-------------------|--------------|
| | output | share | output | share | output | share |
| China | 45,804,252 | 30.82 | 49,581,462 | 31.60 | 50,003,628 | 31.42 |
| United States of America | 10,598,959 | 7.13 | 10,185,748 | 6.49 | 10,555,203 | 6.63 |
| Germany | 5,121,607 | 3.45 | 5,488,369 | 3.50 | 5,474,021 | 3.44 |
| Spain | 3,484,363 | 2.34 | 3,368,921 | 2.15 | 3,466,323 | 2.18 |
| Brazil | 3,015,000 | 2.03 | 3,195,000 | 2.04 | 3,464,520 | 2.18 |
| Viet Nam | 2,782,700 | 1.87 | 3,036,358 | 1.94 | 3,160,048 | 1.99 |
| France | 2,274,108 | 1.53 | 2,254,688 | 1.44 | 2,179,897 | 1.37 |
| Russian Federation | 2,042,059 | 1.37 | 2,330,806 | 1.49 | 2,559,477 | 1.61 |
| Canada | 1,947,830 | 1.31 | 1,925,930 | 1.23 | 1,998,430 | 1.26 |
| Poland | 1,920,400 | 1.29 | 1,894,800 | 1.21 | 1,836,000 | 1.15 |
| world | 148,604,043 | 100.00 | 156,901,001 | 100.00 | 159,125,890 | 100.00 |

Main pig production of China in 2013

图例

China pork

Other area

Yangzi river area

Northern China

Southeastern China

Northeastern China

Northern
China(Hebei,
Shandong, and
Henan)

20.25%

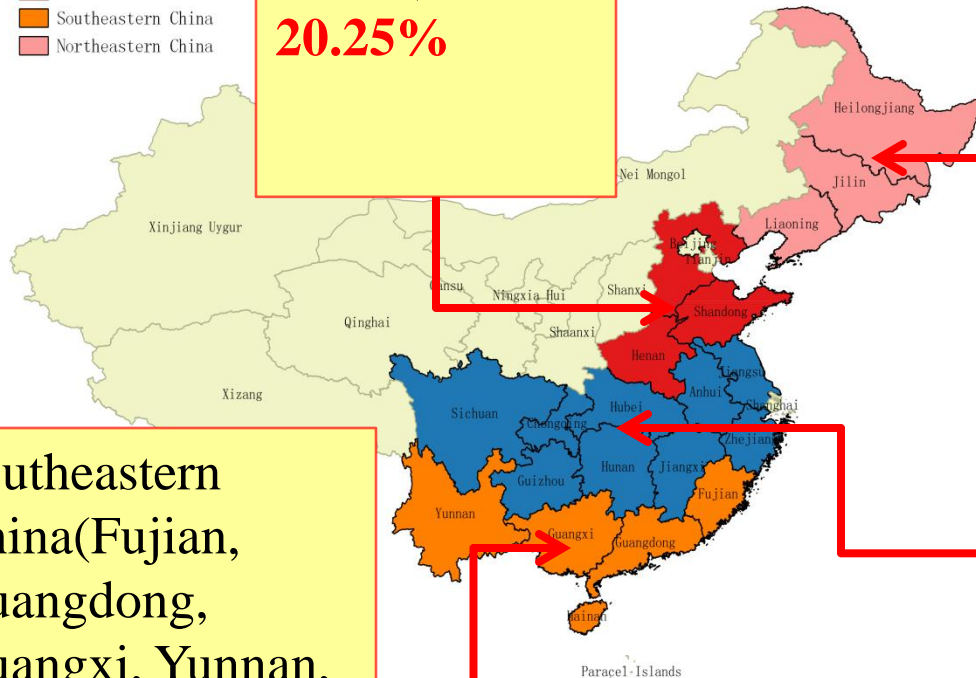
Northeastern
China.(Liaon
ing, Jilin, and
Heilongjiang

) **9.16%**

Southeastern
China(Fujian,
Guangdong,
Guangxi, Yunnan,
and Hainan)

18.63%

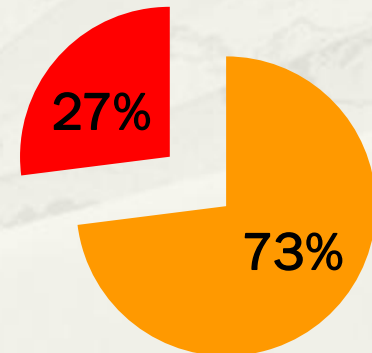
The Yangzi River region
(Sichuan, Chongqing, Hui
zhou, Hunan, Hubei, Jian
gxi, Zhejiang, Jiangsu, an
d Anhui) **44.75%**



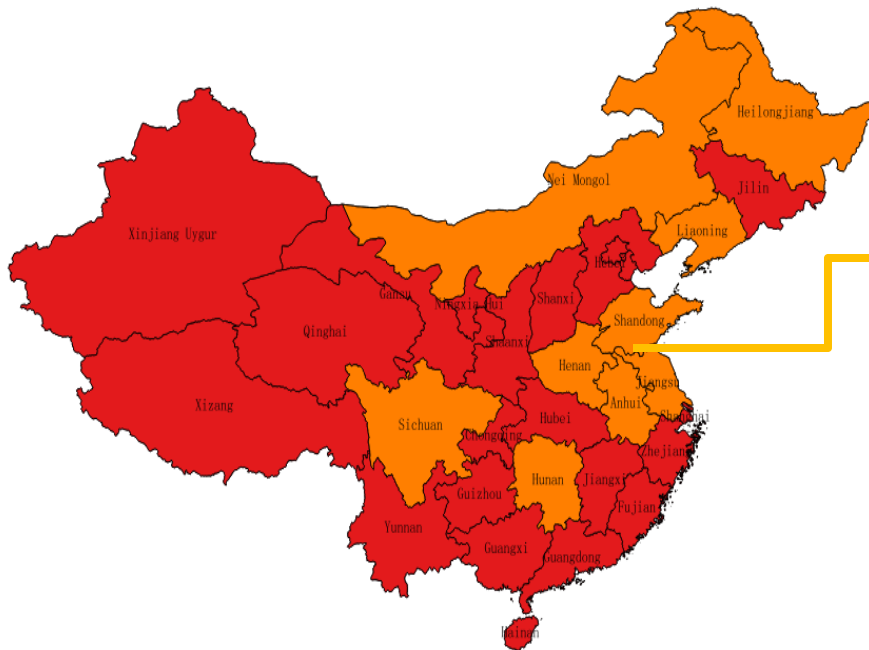
Regional distribution of slaughter companies in China

Slaughtering Companies Located Intensively in Henan, Shandong, Sichuan, Liaoning, Beijing, N eimengu, Jilin, Heilongjiang, Jiangsu, and Anhui provinces.

Industrial Assets Proportion of the Slaughtering Companies

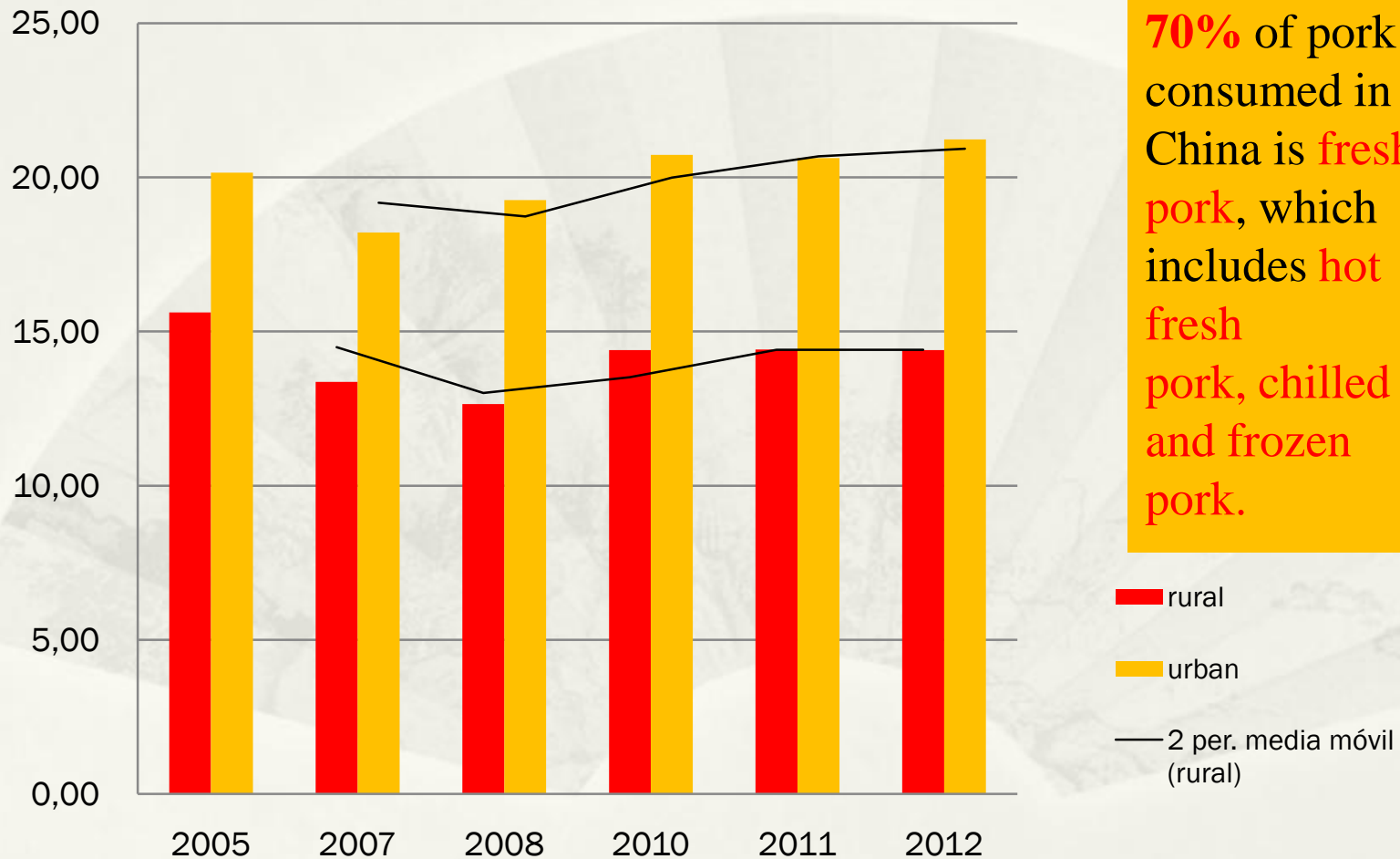


Regional distribution of meat and byproduct processing companies

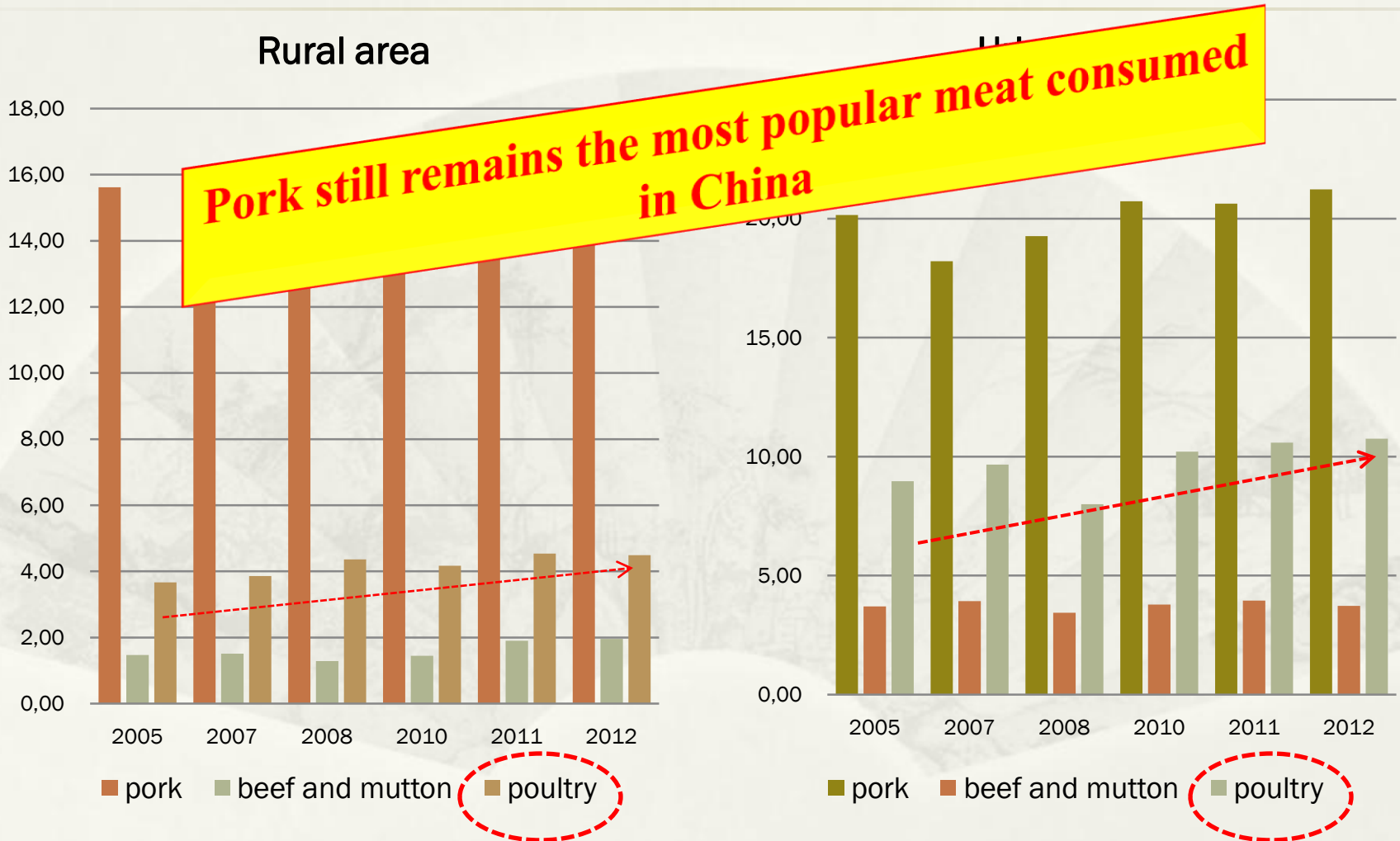


The meat and byproduct processing companies are located intensively in Henan, Shandong, Sichuan, Jiangsu, Anhui, Hunan, Liaoning, Heilongjiang, Neimenggu. The industrial assets accounts for **70.5% of the Total.**

Pork consumption per capita in urban and rural areas



Pork, poultry, beef and mutton consumption per capita in rural area and urban area in China

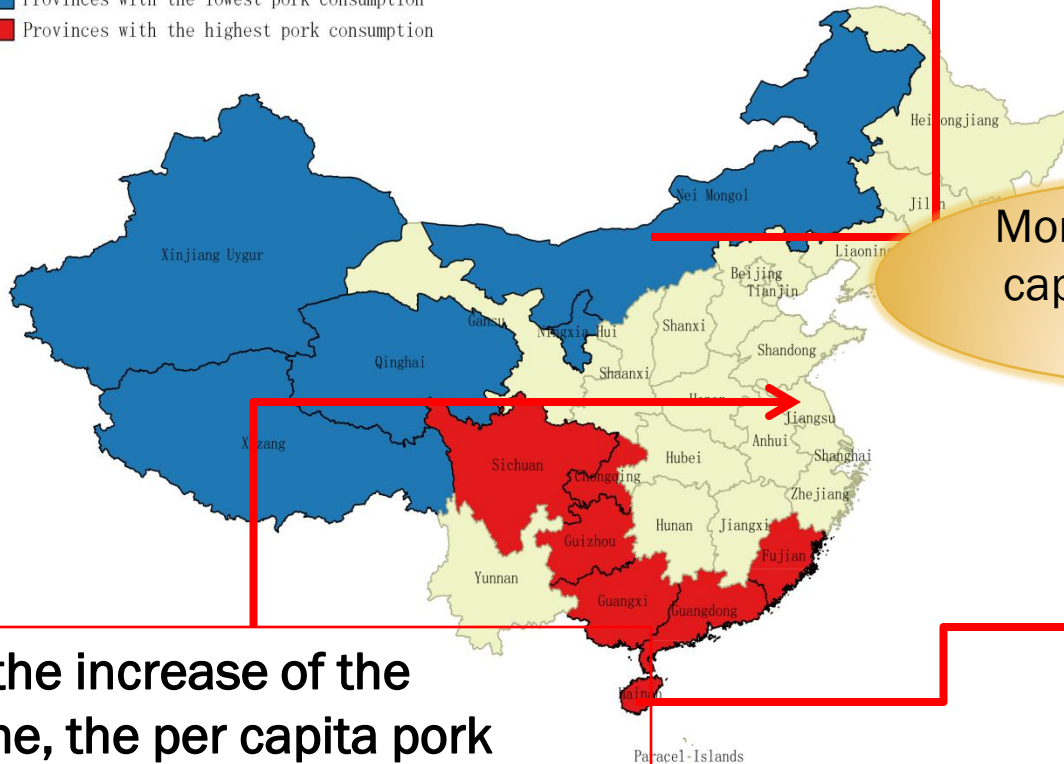


Provinces with lowest and highest consumption of pork in China

图例

China pork

- Provinces with the middle pork consumption
- Provinces with the lowest pork consumption
- Provinces with the highest pork consumption



Monthly average per capita consumption is below **1 KG**

Monthly average per capita is **1.6 KG** in 2013 in China

Monthly average per capita consumption is more than **2 KG.**

With the increase of the income, the per capita pork consumption increase and then decrease.

The trend of pork consumption character

With the continuous improvement of people's living standards, **chilled and frozen meat** will gradually replace the hot fresh meat though hot fresh pork is still widely consumed in rural and suburban areas. In recent years, with the rapid growth of supermarkets in rural towns, the sales of chilled and frozen pork have been increased.

Thank you for your attendance!

